

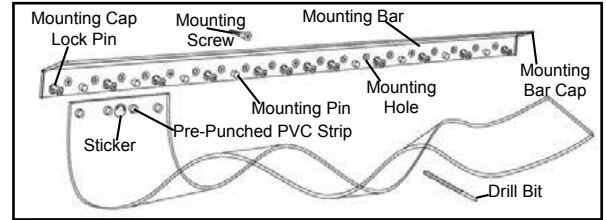
Snap Strip Installation Instructions

Getting Started:

1. Remove the Mounting Bar. Do not remove the PVC strips from the carton until ready for installation.

NOTE: When multiple strip doors are ordered, all carton(s) will be properly tagged. All strip doors are shipped complete with the following:

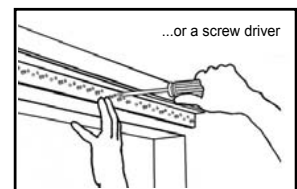
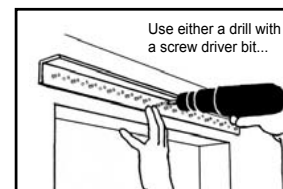
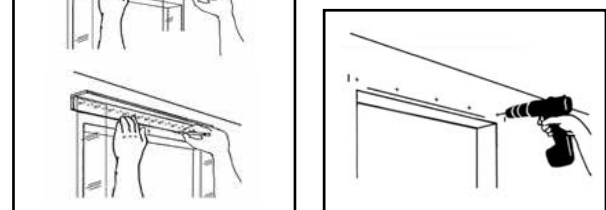
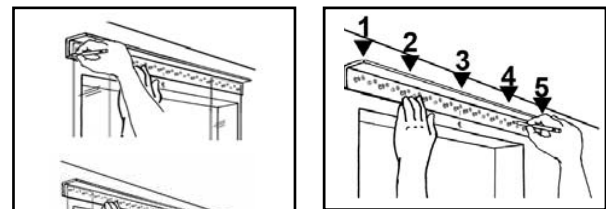
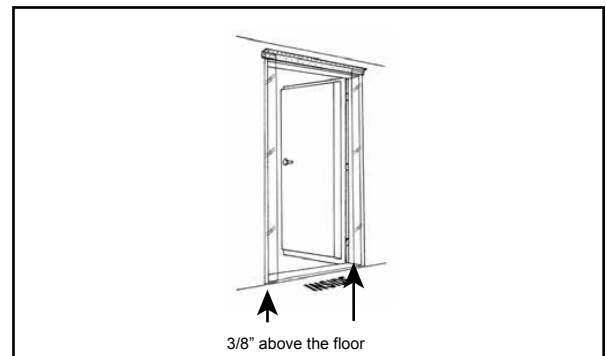
- (1) 40" Mounting Bar
- (5) 3/16" x 1-1/4" Mounting Screws
- (1) 1/8" Drill Bit
- Pre-Punched PVC Strips.



First | Attach the Mounting Bar:

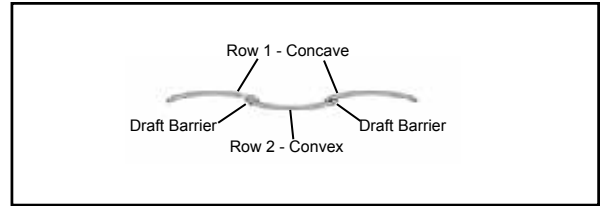
IMPORTANT: Install your PSD on the inside or interior of the doorway.

1. Temporarily attach a PVC strip to both ends of the Mounting Bar.
2. Center and level the bar above the opening so the strips are 3/8" above the floor.
3. Mark lines on both sides of the Mounting Bar and under the Bar between the PVC strips.
4. Remove the PVC strip, replace the bar along the lines and mark five evenly spaced mounting holes.
5. Drill all five pilot holes with a 3/16" bit (Drill Bit is included with five Mounting Screws).
6. Attach the Mounting using the five supplied Mounting Screws.

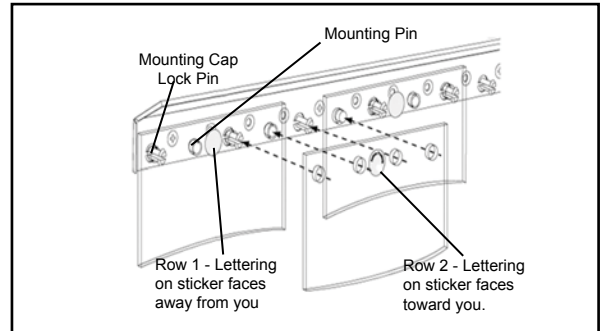


Second | Hang the PVC Strips:

IMPORTANT: All PVC strips have a natural curve across the width of the material. When hung properly (row 1: concave - row 2: convex), it creates a barrier against drafts.



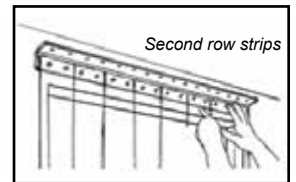
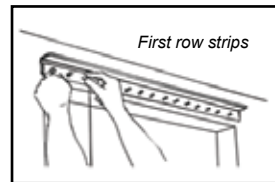
Stickers have been applied to each PVC strip. Attach each PVC Strip by pushing the pre-punched holes over the Mounting Pins and the Mounting Cap Lock Pins on the Mounting Bar.



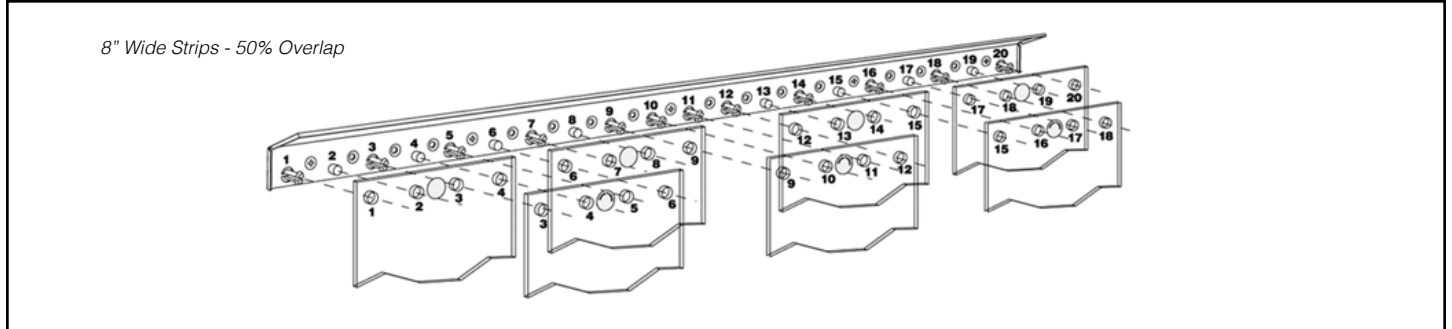
IMPORTANT:

First row strips: Lettering on the sticker should face away from you.

Second row strips: Lettering on the sticker should face toward you.



Overlap Configuration



Third | Close the Cap

1. Push the Mounting Bar Cap Shut.

